

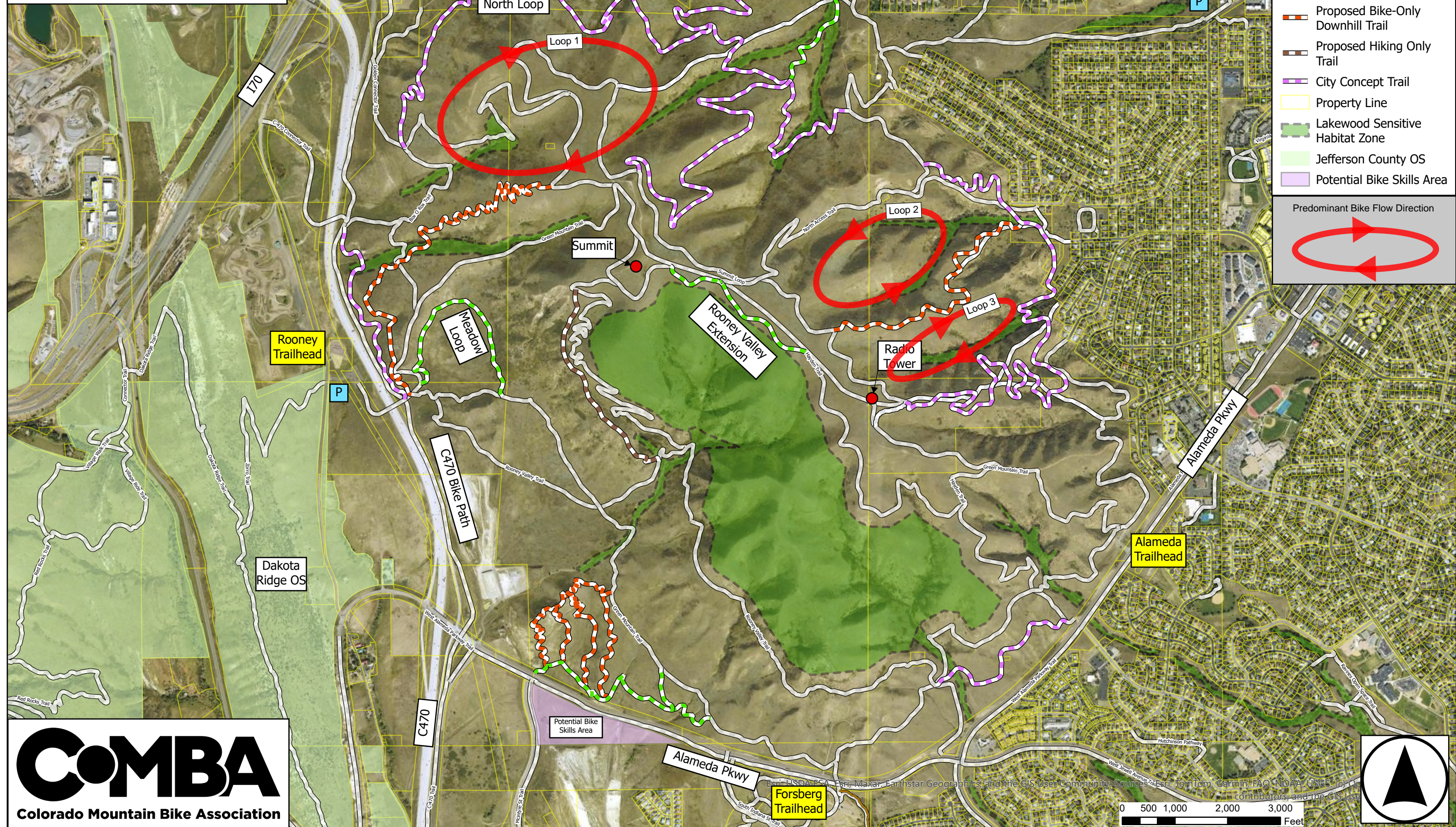
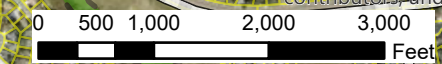
Green Mountain
 Conceptual Master Plan
 January 2026 v1.4

- 1 Trail Segment Number
- P Potential New Parking Area

Legend

- Existing Trail
- Proposed Multi-Use Trail
- Proposed Bike-Only Downhill Trail
- Proposed Hiking Only Trail
- City Concept Trail
- Property Line
- Lakewood Sensitive Habitat Zone
- Jefferson County OS
- Potential Bike Skills Area

Predominant Bike Flow Direction

Esri, USDA, Esri, Maxar, Earthstar Geographics, and the GIS User Community, Sources: Esri, TomTom, Garmin, FAO, NOAA, USGS, (c) OpenStreetMap contributors, and the GIS User Community